

# Business Intelligence Software

## Dundas BI: Benchmark Report

# Table of Contents

<b>Introduction .....</b>	<b>3</b>
<b>The Benchmark Report .....</b>	<b>4</b>
Platform Functions .....	5
Data Visualizations .....	6
Analytics .....	8
Online Analytical Processing .....	9
Document Management.....	10
Decision Services.....	11
Integrations .....	12
Big Data Integration .....	13
Deployment Environment .....	14
<b>Conclusion .....</b>	<b>15</b>
<b>Methodology .....</b>	<b>16</b>

# Introduction

Not all software is created equal. Sure, there are lots of variable software solutions — your company might not need *every* feature and maybe isn't looking to drop tons of cash on a computer program. But when it comes to business intelligence — no matter the product — there's a set of features you absolutely need; core functions that can turn your business into a data digesting, metric mastering machine.

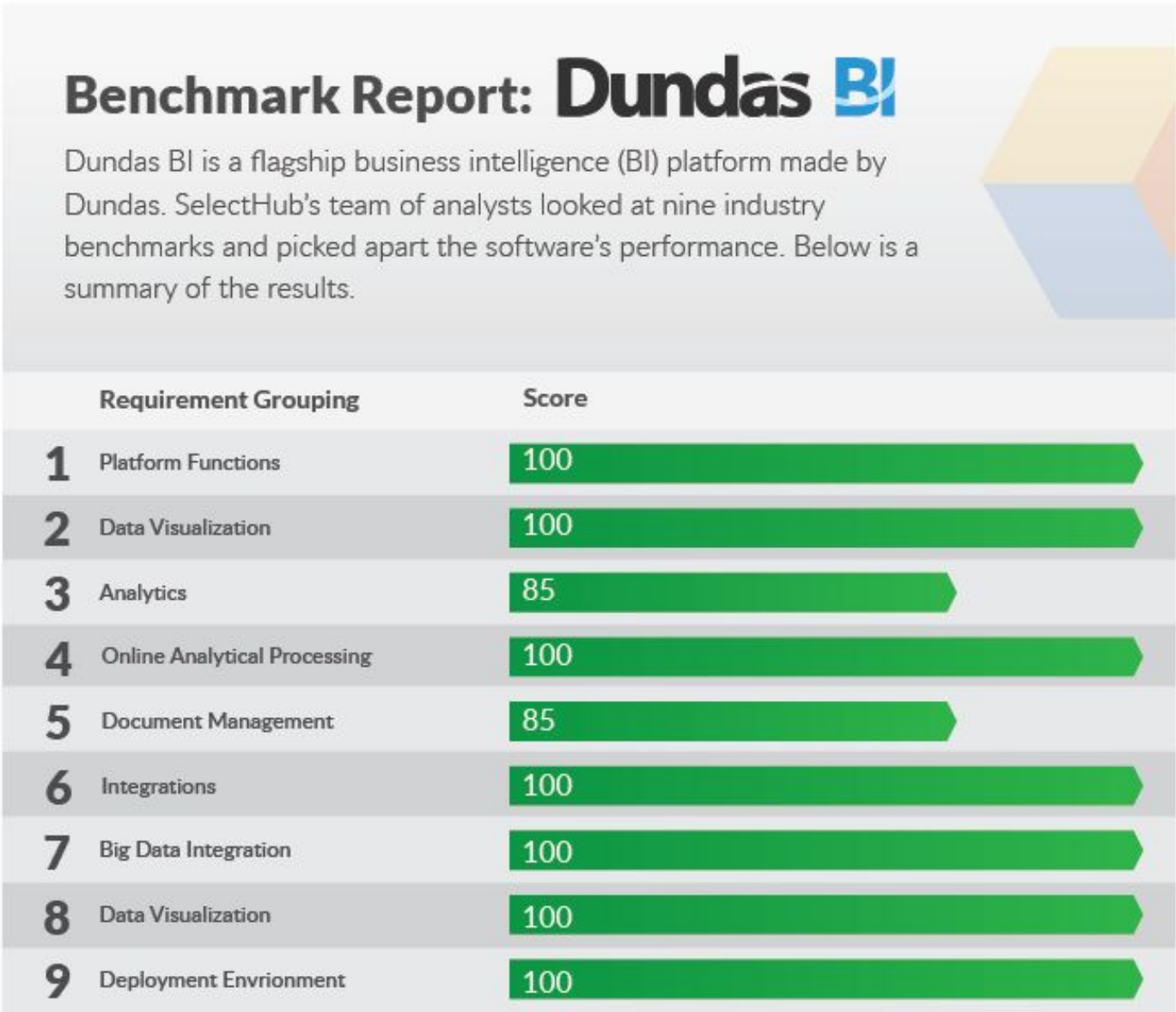
Dundas BI is an award-winning, browser-based BI tool that claims it can meet all of your data and intelligence needs. So, we're giving it the full benchmark treatment to find out if that's true. We've worked closely with the SelectHub analyst team to pick apart the platform in terms of data visualizations, integrations, functionality and so much more — all for you, dear reader. Read on for our full Dundas BI Benchmark Report.



# Dundas BI: The Benchmark Report

Our team of analysts has worked through hundreds of business intelligence products, scoring them against nine industry-standard requirements groupings, in order to give our users a clear picture of what the software is capable of. These groupings are made up of the features, capabilities, deployments, etc. that average companies tend to look for when shopping for a new BI system.

Vendors can be awarded 100 (Excellent), 85 (Good), 50 (Partial/Third-Party) or 0 (Not Supported) for how well they support each group of requirements. For groupings that receive a rating of 85 or higher, we'll also dive into what sets the vendor apart from their competitors.





# Dundas BI: The Benchmark Report

## Platform Functions (cont.)

It easily integrates into existing systems such as portals, CRMs or company intranets so users can report on their pre-existing data. Users can also take advantage of a robust, open API to prepare data, connect to alternative data providers, manipulate charts and much, much more. Dundas's app has a fully exposed, underlying API, enabling customization of any aspect within the system.

Dundas also packages a script library with a plethora of samples so you can customize your software to meet your needs. You have access to visualization controls, data interactions, data export, data filtering and other platform services.

*The SelectHub Analyst team gives Dundas BI a score of 100*

**What Makes Dundas BI Different:** Dundas built their solution in such a way that it allows users to take advantage of an optional layered approach. This architecture enables users to interface with the data no matter where it originates from. Dundas also features an in-system recycle bin, which allows users to restore deleted reports for up to 30 days.

## Data Visualization

Speaking of visualizations, Dundas BI offers a robust visualization suite for picking apart and displaying data in meaningful ways. For a company with 25+ years of experience in the visualization space, this is no big surprise.

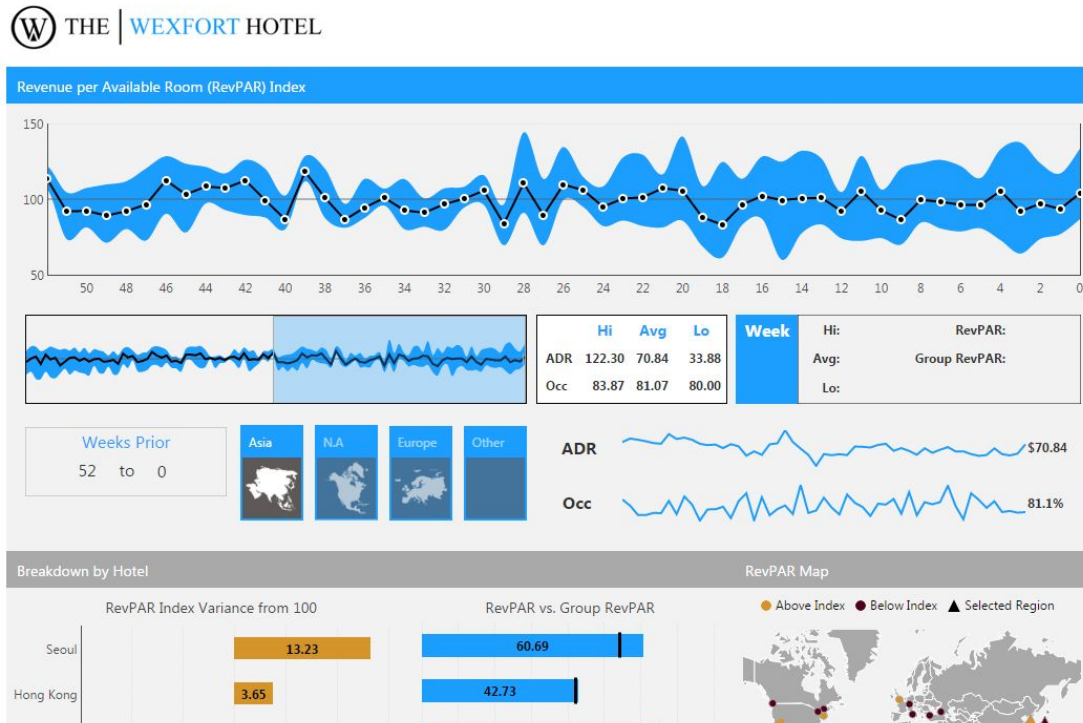
Besides a massive pool of standard visualizations, you can also enjoy unique, interactive visualizations with the freedom to customize them to your *exact* needs. This makes it so you never have to compromise when compiling a report. Dundas ensures your visualizations are always comprehensive and engaging, no matter what you're reporting on.

Dundas also offers a suite of interactive relationship diagrams with drag-and-drop setup, which reveal connections between data points that wouldn't otherwise be recognizable. These include Sankey diagrams, tree diagrams, chord diagrams and more.

Correlation tables (included in the app) find dependencies between multiple variables and work great alongside Dundas BI's auto-generated parallel coordinate visuals, which can analyze multivariate data similarities.

# Dundas BI: The Benchmark Report

## Data Visualization (cont.)



*The system allows businesses to create personalized dashboards for quick analysis.*

Dundas BI also gives users the ability to share reports quickly and efficiently by coupling with its built-in mapping functions. Its mapping functions leave the user wanting little, presenting color-coded data visualized with ESRI shapefiles; commonly used in GIS visualizations.

In addition to ESRI shapefiles, Dundas supports mapping services such as Mapbox and Bing Maps. The system can also populate symbols and paths from your data source to show the relationship between the two symbols — for instance, shipments between two cities.

*The SelectHub Analyst team gives Dundas BI a score of 100*

**What Makes Dundas BI Different:** What truly sets Dundas apart is their Visualization Recommendation Engine. This engine takes the analyzed data and automatically chooses the best type of representation to convey the data. The system may suggest a bar graph, pie chart, etc. to maximize the data's potential while of course allowing for maximized customization and interactivity.

# Dundas BI: The Benchmark Report

## Analytics

Analytics is the bread and butter of business intelligence software, and Dundas BI, understandably, claims to offer a powerful analytics experience. In truth, Dundas performs admirably.

What Dundas BI does, it does well. You can compare data from multiple sources, and the software's built-in functions and formulas can pick apart and analyze these sources. Access to third-party sources is customizable by users with their configurable, open API.

The solution offers a strong package of predictive and advanced analytics functions, right alongside its robust data library of visuals. There's also real-time analysis features bundled in there so you can take a swing at your data shortly after it's collected.

Let's not forget to mention its built-in integration with Python and R. Using these two powerful languages, you can automatically score a new customer passing through your CRM, and then hand them off to your dashboard-consuming teams, enabling greater collaboration.

You can use Python and R transforms for a variety of functions, including script execution that can load pre-built machine learning model objects and use it on new data.

Dundas BI's advanced forecasting and clustering formulas (like exponential smoothing, K-Means clustering algorithm and more) enhance its predictive analytics abilities. If you need a little extra insight, look no further than its auto-detecting hierarchies that enable drill-down/up in multi-dimensional, ragged and unbalanced hierarchical data.

It also auto-detects time dimensions to automatically aggregate data based on years, half years, quarters, months, weeks and days.

*The SelectHub Analyst team gives Dundas BI a score of 85*

**What Makes Dundas BI Different:** Users of Dundas can take advantage of predictive analytics while also considering seasonality and very recent trends. The program uses smart clustering algorithms to group data together based on similarities.



# Dundas BI: The Benchmark Report

## Online Analytical Processing

Online analytical processing, also known as OLAP, is essential in today's web-driven business world. The realm of web analytics is competitive, and for those seeking OLAP features, Dundas BI has it in spades.

The software offers integration with OLAP servers (multi-dimensional databases), including SAP NetWeaver BW, Oracle Essbase and Microsoft SSAS. Oh, and did we mention that you can wrap up the OLAP data sources in its data models and powerful visual analytics suite for faster data exploration?

In Dundas BI, everything (relational and OLAP data) is modeled through data cubes, which are multi-dimensional data models that comprise measures and hierarchies. Dundas lets you view non-OLAP sources (like relational databases) as their own cubes, without having to use an OLAP system.

The company offers integration with Microsoft SQL Server Analysis Services (SSAS), Azure Analysis Services, SAP NetWeaver BW 7.0+, Microsoft PowerPivot, Oracle Hyperion Essbase 11 and more.

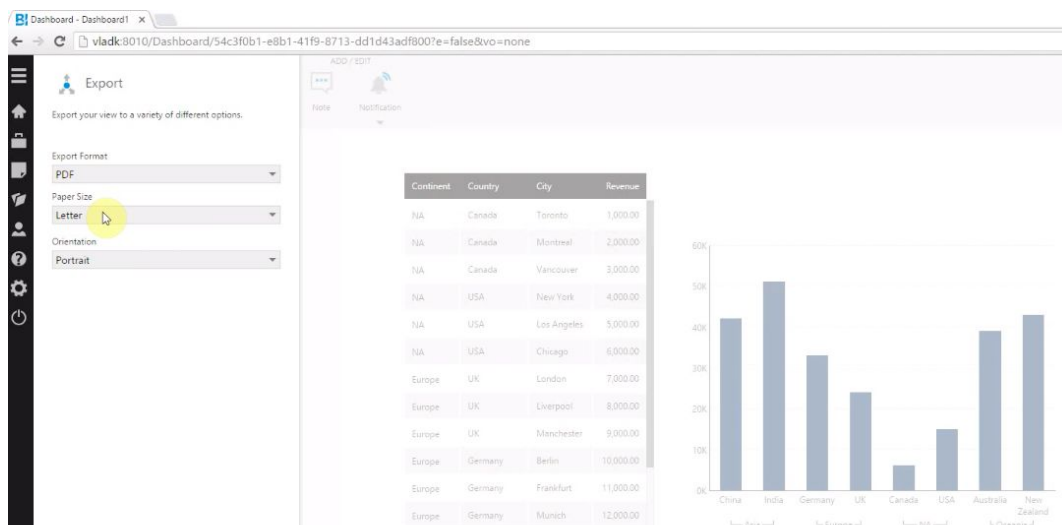
*The SelectHub Analyst team gives Dundas BI a score of 100*

**What Makes Dundas BI Different:** Users can enjoy data diversity, with complete and consistent support for drill-down and expand/collapse for both OLAP and non-OLAP data sources. Creating ragged and standard hierarchies is easy, and built-in time dimensions (also customizable) can help you keep track of important data and its origin.

# Dundas BI: The Benchmark Report

## Document Management

Dundas BI offers support for third-party documents such as MS-Excel, MS-PowerPoint, PDF and PNG. It's all fairly standard stuff, including its exporting capabilities, which is done manually, or you can set a schedule to trigger this feature at certain times. Reports can then be emailed or automatically saved into shared folders.



*The interface makes file exporting simple with drop down menus*

Dundas BI supports the following formats for export:

- Excel
- PDF
- Image (PNG)
- Powerpoint

Dundas BI offers some additional document management and administration features that can help you stay on top of your (digital) paperwork.

# Dundas BI: The Benchmark Report

## Document Management (cont.)

Versioning, for example, will log revision history for each data source, cube, model, visualization, dashboard and report, with history restoring. Most of Dundas BI's competitors don't even have versioning. But when they do, it's not as fully-featured as what Dundas offers, which goes an extra step by coupling its check-in and check-out system to all aspects of its documentation system.

*The SelectHub Analyst team gives Dundas BI a score of 85*

**What Makes Dundas BI Different:** The software offers superior versioning and ownership features, as compared to other solutions. Version history is saved for each file for easy restoring, and collaboration is a breeze.

## Decision Services

Dundas BI offers superior software and decision services. Software services provide administrative oversight and assist in regulatory compliance. From [our own checklist](#), here's what goes into decision services:

- Financial management
- Regulatory compliance
- Monitoring
- Threat/fraud detection
- Consulting services

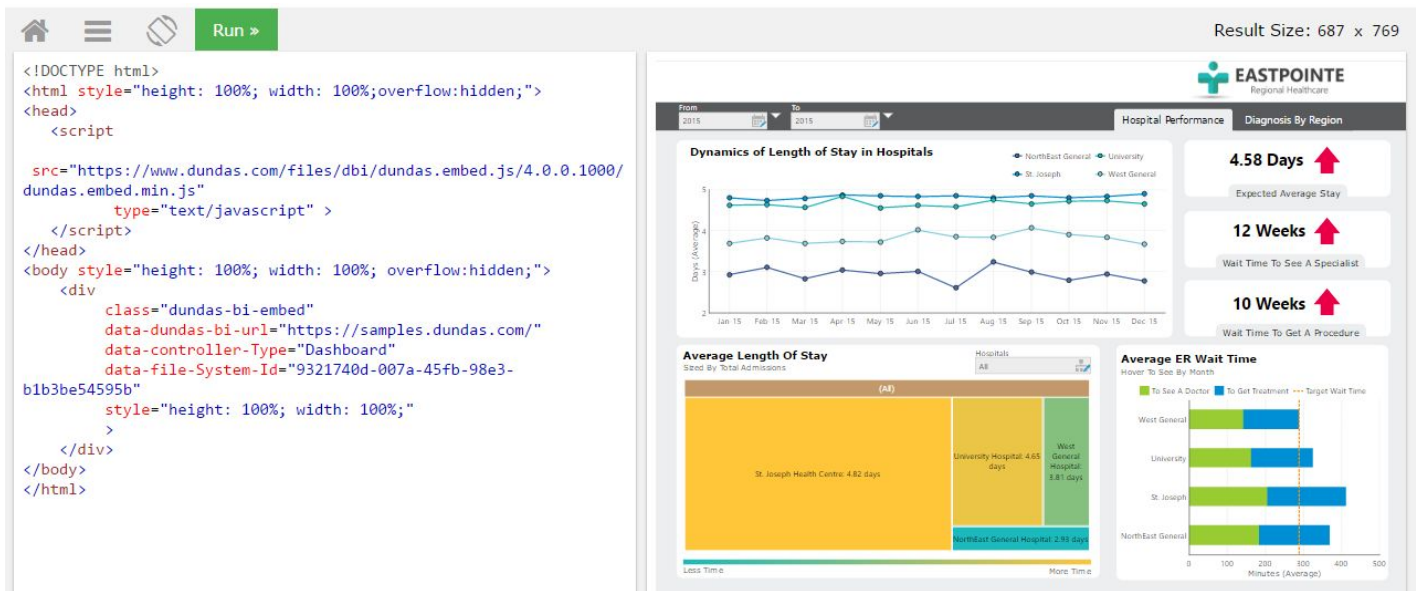
Dundas BI's solution is comprehensive because it provides the tools users need to conduct deep financial analysis and maintain compliance with regulations like the GDPR, which, in today's data-driven landscape, couldn't be more important. The software also allows users to detect and track fraud across their analytics enterprise.

Using real-time data, customers are empowered by Dundas BI's decision services to make crucial decisions about the past, present and future. Coupled with the product's analytics suite, making future predictions is easier than ever before.

*The SelectHub Analyst team gives Dundas BI a score of 100*

**What Makes Dundas BI Different:** The system offers fine-grained logging options for each application component along with pre-built dashboards for usage and performance tracking. Moreover, the vendor works with clients from day one of their evaluation to ensure maximized use of the platform for monitoring purposes.

# Dundas BI: The Benchmark Report



*Dundas BI allows for light customization by end users or full scripting on the backend*

## Integrations

Integration refers to pulling data from many other sources, or, integrating it with the constantly evolving stream of data you have. Things like customer relationship management (CRM) tools, enterprise resource planning programs and even office tools are all candidates for integration.

The program allows for integration with ERPs, CRMs like Salesforce, MS-Office Products, ETLs, and yes, big data sources as well (which we'll cover later in this Benchmark Report).

Dundas BI covers multiple layers of integration deftly. If you want to take a step back, end-user customization is easy, but if you want to dive deep, robust CSS styling and scripting features are waiting for you.

Some additional integration features include:

- A full, open API
- Extended scripting
- Integration into client portals, CRMs, intranets and more
- Support for authentication, user management and administration

# Dundas BI: The Benchmark Report

## Integrations (cont.)

*The SelectHub Analyst team gives Dundas BI a score of 100*

**What Makes Dundas BI Different:** One of the unique aspects of Dundas BI's integration abilities is how it's able to automatically detect tables in non-standard Excel files. With a drag-and-drop tool, users can upload an Excel spreadsheet into the platform and automate subtable detection.

Dundas BI is also extensible through .NET, REST and JavaScript APIs. The vendor also provides an extensive list of data connectors, which includes Google Analytics and Salesforce. More connectivity is offered through ODBC or JDBC drivers and using R or Python.

## Big Data Integration

Any data that has outgrown standard warehousing and databases of the like are classified as "big data." And that's a LOT of data.

- By 2020, analysts predict there will be 5,200GB of data for every person on earth
- Over 200 billion emails are sent and received each day

And that's just the tip of the iceberg. Healthcare and other industries live and die by big data. They generate and process data ranging from customer health records to full-on X-ray scans and medical images in the terabytes each day. That adds up quickly. And depending on the industry, you'll want eyes on that big data.

So it's safe to say that big data is not just out there as some kind of nebulous idea — it's very real and very important to your business. That might be why Dundas BI excels with integrating big data sources into its product.

*The SelectHub Analyst team gives Dundas BI a score of 100*

**What Makes Dundas BI Different:** The software provides integration with Hadoop, Hive, Hbase, Cassandra, MapReduce, Google BigQuery, Amazon Redshift, Spark SQL, MongoDB and more, empowering users with access to large quantities of high-quality data. The solution can ingest data at high volumes and then process and parse it, after which you can utilize Dundas BI's robust reporting and sharing features to make sense of it.

# Dundas BI: The Benchmark Report

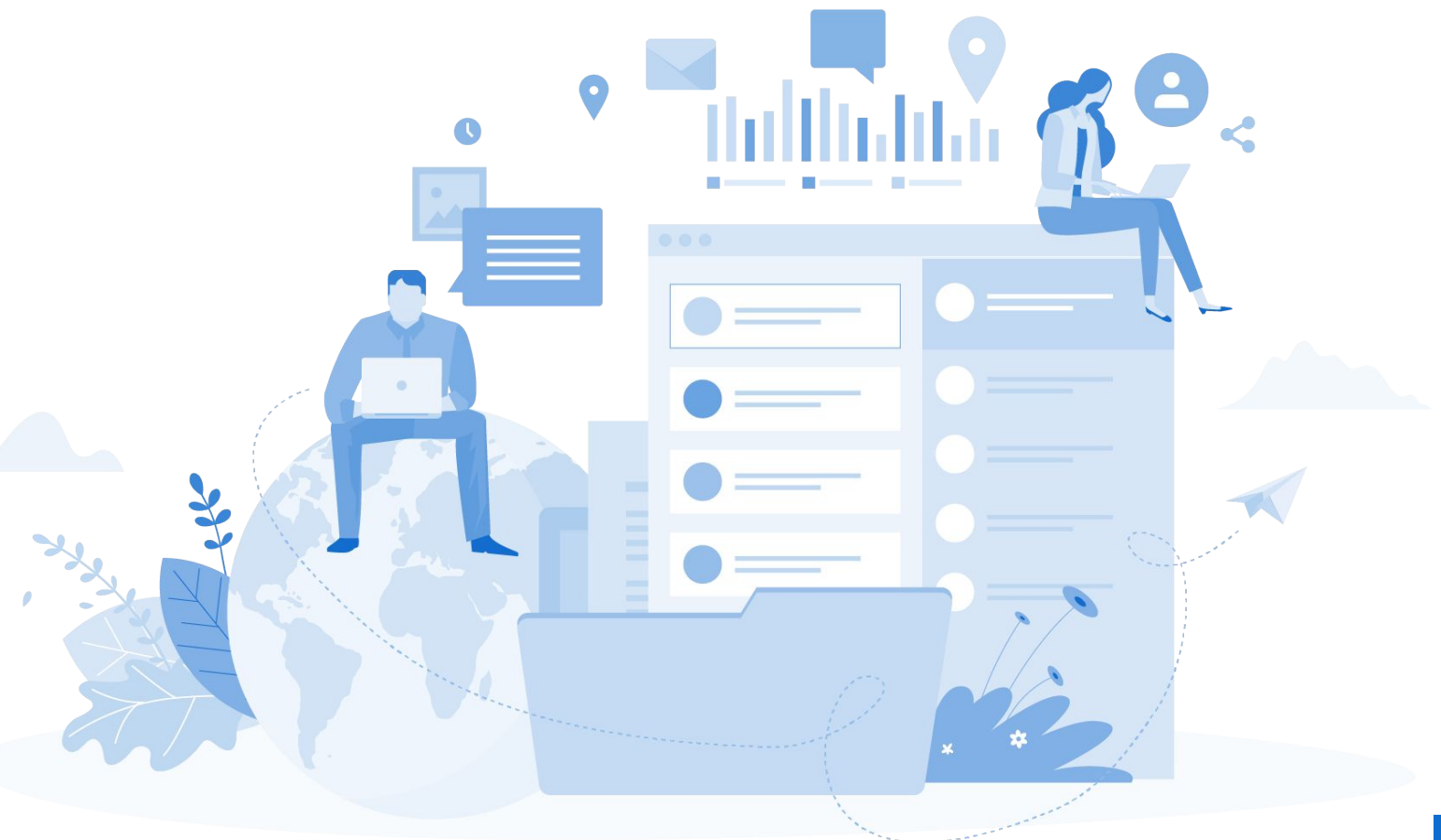
## Deployment Environment

Choosing between an on-premise deployment or a cloud-based solution is something every software buyer will have to consider. There are a range of factors that can influence one's decision, including security concerns, price, convenience, internet connection and more.

That said, Dundas BI is flexible in both capacities, so you get to pick the deployment method that's right for your business model.

*The SelectHub Analyst team gives Dundas BI a score of 100*

**What Makes Dundas BI Different:** This vendor offers a Deployment Application which allows users to easily choose their deployment method. Dundas also offers full functionality on all Windows, Mac, iOS and Android devices, accommodating touch screens.



# Conclusion

Dundas BI is a program that excels in all critical areas of a business intelligence platform and thus earns a top spot in SelectHub's [BI Leaderboard](#). Dundas BI is more than capable for most of your business needs, receiving high marks for nine of nine requirements groupings as determined by our analyst team.

While Dundas BI is more than capable in terms of functionality, it's also important to consider other factors during your software selection such as company size, number of users, cost and more. Make sure to perform well-rounded research before making a final decision as it pertains to your next BI solution.





# About SelectHub

SelectHub is a cloud-based technology selection management platform that streamlines software selection, making IT sourcing more agile and collaborative. The platform supports a comprehensive set of evaluation stages such as requirements gathering, vendor shortlisting, demo use case management, RFI/RFPs and contract negotiation. The SelectHub user community includes more than 35,000 companies ranging from SMBs to large enterprises. To learn more, please visit <https://selecthub.com>.

## SelectHub Methodology

### Sources of Leaderboard Data:

SelectHub sources their data from RFI questionnaires submitted by the vendors, vendor and product websites, whitepapers, analyst reports and reviews, user reviews, and more.

### Scores:

The vendors are rated against the key requirements determined by SelectHub's analyst team. SelectHub has an inbuilt scoring algorithm which scores a product per requirement and also provides an overall score. This scoring algorithm is not specific to a particular Leaderboard but is instead universal for all Leaderboards.